

Steps towards integration

The City of Gothenburg

The City of Gothenburg



Gothenburg is Sweden's second largest urban area and the Nordic region's fifth largest with 610,000 inhabitants in the city area and 1,060,000 inhabitants (2021) in the urban area.

The city is located on the Swedish west coast and have a large port, many industries and two universities.

Migrants in Gothenburg

- Labor immigration due to free movement in the EU is about half the size in Sweden as in Germany as a percentage in relation to the population size.
- Our labor market projects aimed to help migrant's concern almost exclusively people who came to Sweden from countries outside the EU and many of these have come here as refugees or relatives of other immigrants.

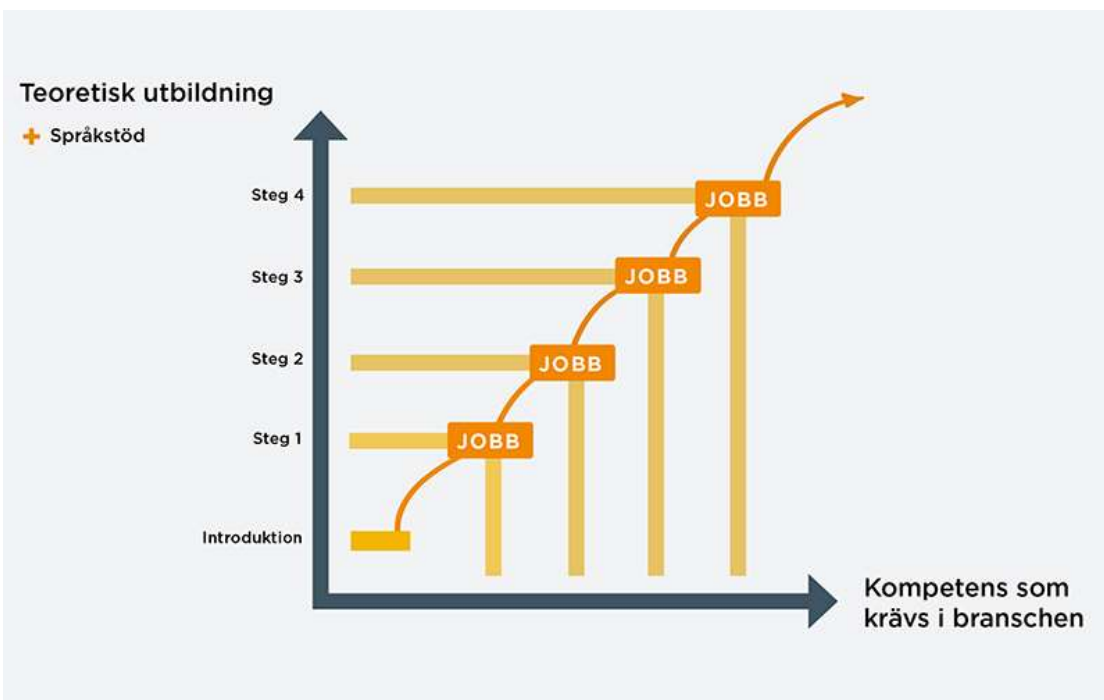


International House - A new welcome center



- International House Gothenburg is a meeting place for international talents. It is designed to offer activities, services and guidance for an easy integration into Swedish society. All in one place.
- International House Gothenburg is a collaboration between City of Gothenburg, Business Region Göteborg, Region Västra Götaland, Labour Market and Adult Education Committee City of Gothenburg and Move to Gothenburg.
- <https://www.movetogothenburg.com/international-house-gothenburg>

Step by step training



The city provide Step-by-step training for migrants within occupational areas with a lack of employees with the right skills.

In dialogue with the industries, suitable first jobs are identified and the jobs possible to move on to.

Then short tailored training and step-by-step competence development are put together for the specific tasks that the jobs entail. The first step has extra focus on motivation and faith in the future.

Step by step training



As we speak, we have gradual education in **elderly care, industry, commercial kitchens and constructions.**

One step in - and more steps ahead

For the participants, the gradual increase in jobs and knowledge first means a shorter education, individually adapted to work experience and language skills, and then help in applying for a job.

After the first job, the participants are offered further training to move on to greater professional skills, new tasks and a stronger position in the labor market.

The Integration center

- The City has a “Center for Integration” that is an office for migrants in Gothenburg
- Here newly arrived habitants can study community orientation or one of the specialization courses for example about health, parenting, more about Sweden.
- You also get individual help at this multilingual information office and possibility to attend thematic meetings, participate in the Women's Compass, sign up for a “language friend” and other activities.



Roma inclusion - Romano Center West



- Romano Center West was started in 2015 as a project in Gothenburg under the management of the city and it is now a permanent institution, it functions as an information- and citizens' office dedicated to the Roma minority of Gothenburg.
- The center and its staff provide support to the Roma community in matters relating to work, education, social services, health care and housing, as well as other issues that relate to their ability to fully participate in society – they also work family orientated to reach out in the Roma Communities
- The City of Gothenburg conducts regular consultations with all the national minorities that have residents in our city. The aim is to create a structured dialogue with minorities and to ensure the rights of national minorities are met. The domestic Roma group is approximated about 10 000 inhabitants in Gothenburg.

Education support for the Roma minority

- As one of the most important issues for Roma inclusion is linked to low or incomplete education within the Roma group, the Romano Center has worked specifically to prevent school dropouts and to motivate young Roma people and young adults to complete their studies.
- In this area, Romano Centers has received an equality award from the city in 2021, when it stood clear that many in this target group had resumed their studies following the efforts of the Romano Center.



Contacts:

Louise Stiernström

louise.stiernstrom@socialcentrum.goteborg.se

Tina Naga

tina.naga@arbvux.goteborg.se

Sofia Olsson Quist

sofia.olsson.quist@socialnordost.goteborg.se

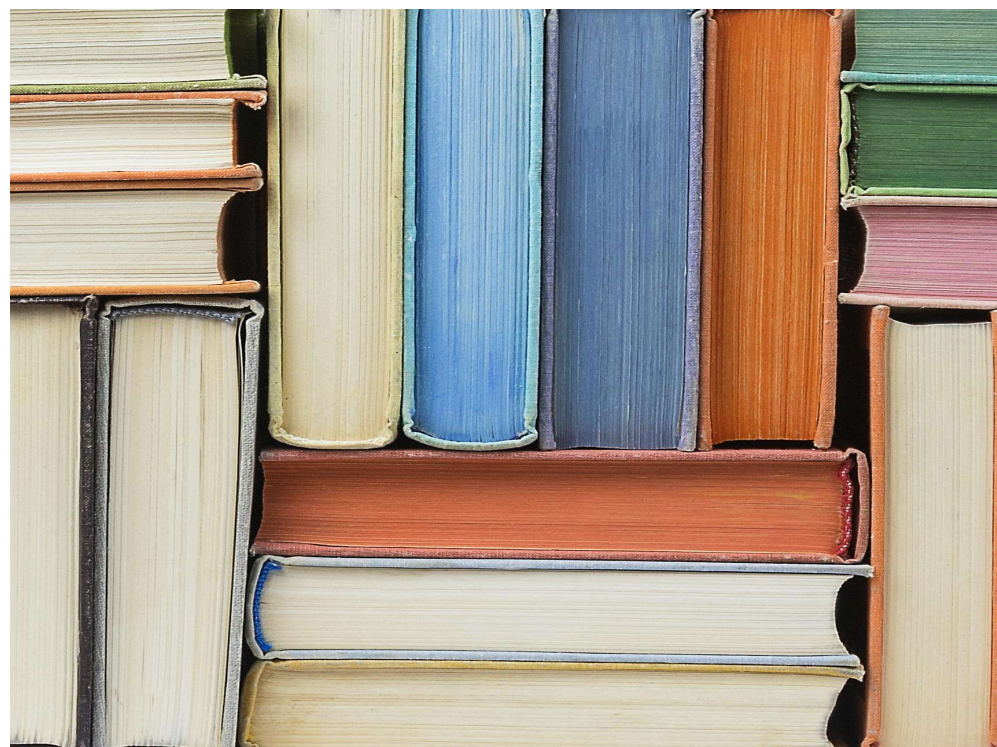


Working life and health

Working life & health is a vocational rehabilitation project with focus on individually designed support within areas such as language, health and digital competence.

Resources and methods

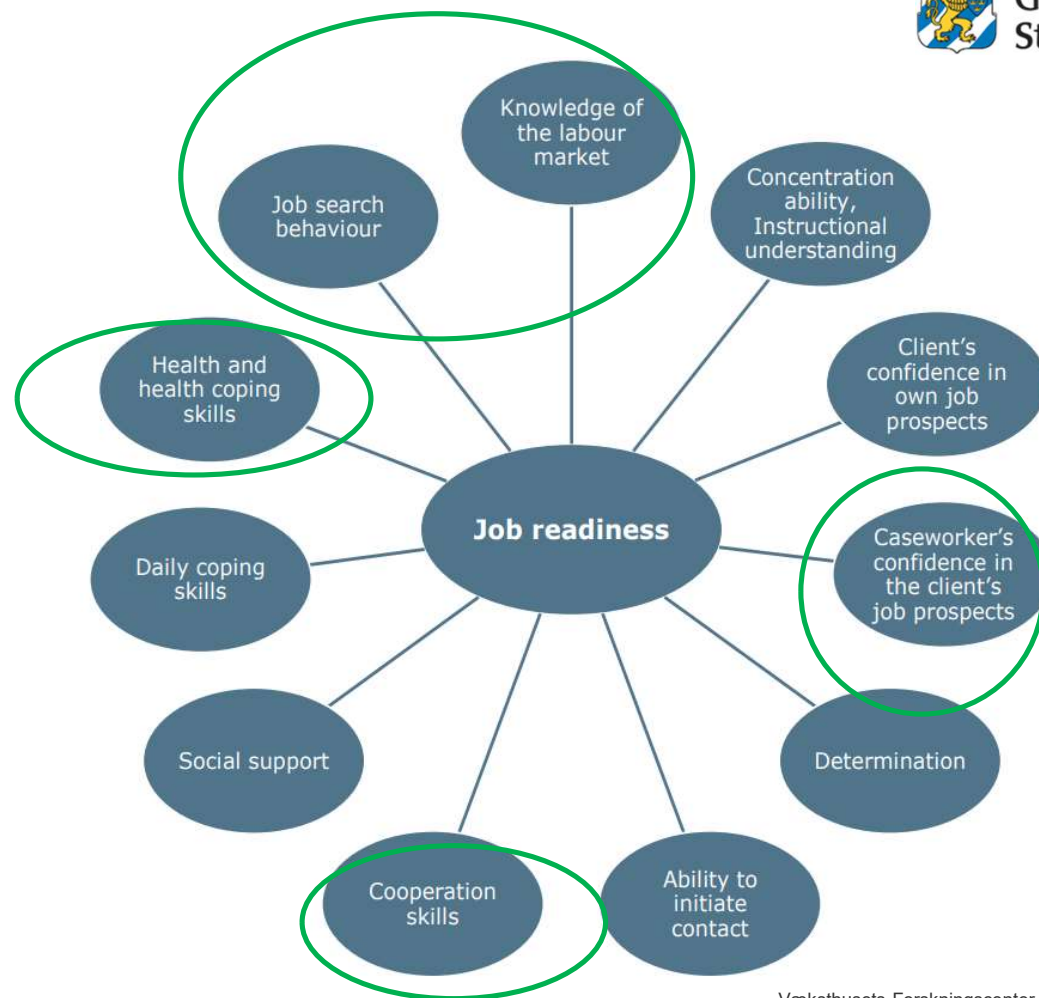
- Holistic approach, coordinator
- Job-coach
- Health-coach
- Study and career counsellors
- Digital-coach
- Vocational training in our own workshops and in the private sector
- Supported Employment
- An environment that supports communication in Swedish



Holistic view

The BIP model from the Danish
research (The Employability Indicator
Project)



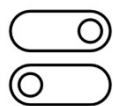


Væksthusets Forskningscenter

BIP

[Beskæftigelses Indikator Projektet]
Væksthusets Research Center in
Denmark

Our approach to BIP



Combination of activities; always one job-oriented



Visible determination



One person/coordinator follows the participant all the way



Measuring progression by self-assessment to see if the activity fulfills its purpose

**So what does all this mean
for our participants?**

A different approach!



Challenges

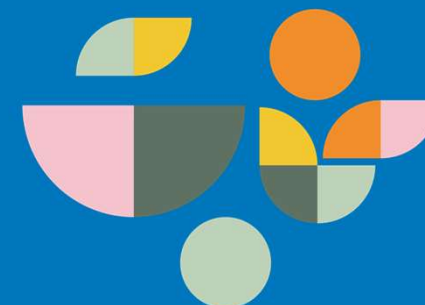


- To shift from Steps to Holistic approach with parallel activities
- To maintain confidence in the participants job prospects

Projects Landa and NorthEast

With this project, we strive to develop methods between the coordinating association and civil society creating opportunities to capture and support the target group to reach or approach work or studies

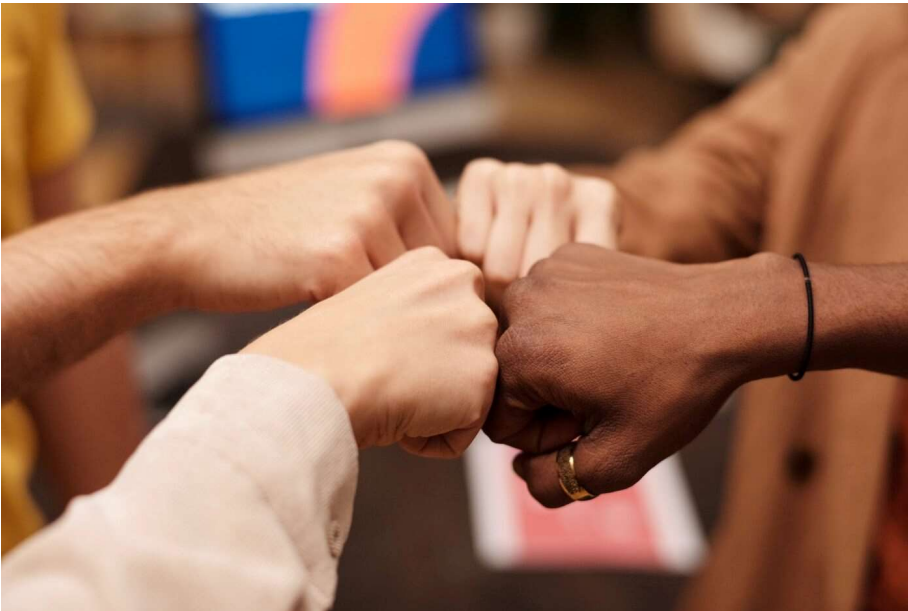
Project's timeframe: September 2020 – February 2023



Aim

- About 220 women and men will have access to the project's activities. 75% of all participants should feel that the project has helped them approach the labor market.
- The main goal of the LANDA project is to increase the actual integration into society for the target group. It is about providing improved opportunities for education, employment, work and participation for foreign-born men and women who are particularly distant from the labor market or who are at risk of long-term alienation from unemployment.
- One other big aim is to develop new collaboration models in public and private business and organizations in civil society.

Target group and challenges

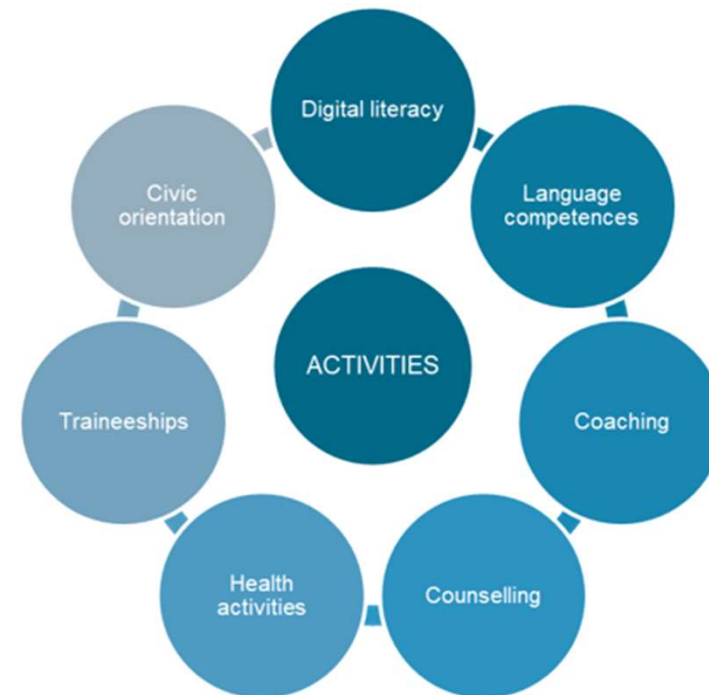


The target group is characterized by:

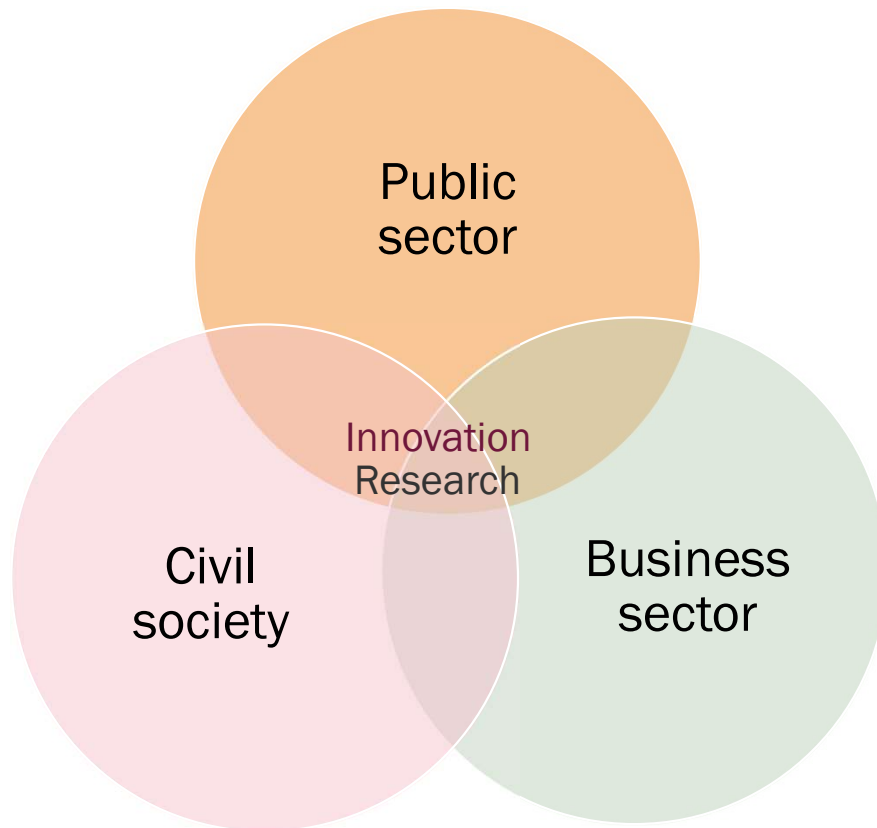
- Lack of Swedish language competences
- Inadequate or no work experience and/or training
- Low level of education
- Insufficient or no knowledge about the Swedish labour market
- Insufficient knowledge about the Swedish society
- Insufficient or no computer skills

Methods and activities

- BIP
- Human rights perspective
- Supported Employment
- Holistic view
- One person/coordinator follows the participant all the way
- The participant can meet five different professions in the project and work with different goals
- Service Design methods
- Study and career guidance

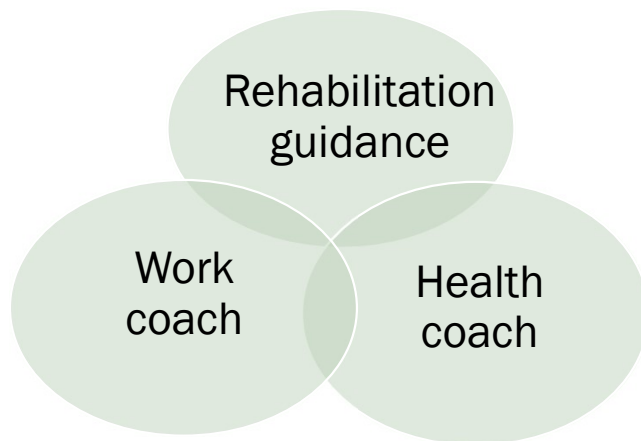


Our method



- Cooperation project between Gothenburg City, civil society and the business sector.
- Cross-sectoral collaboration for innovative solutions to support people to work life
- One sector alone will not be able to find a solution to the complex question: How to extend work integration

The unique with project Northeast



- Development at your own pace
- Group activities
- Support for empowerment
- Coordinated support
- Parallel processes / point interventions
- No waiting times to start the project
- Time for each individual